

System Quick Start Guide



Disclaimer

Control4® makes no representations or warranties with respect to this publication, and specifically disclaims any express or implied warranties of merchantability or fitness for any particular purpose. Control4 reserves the right to make changes to any and all parts of this publication at any time, without any obligation to notify any person or entity of such changes.

Trademarks

Control4 and the Control4 logo are registered trademarks of Control4 Corporation. Other product and company names mentioned in this document may be the trademarks or registered trademarks of their respective owners.

Legal Notices

MPEG

Fraunhofer IIS and Thomson. MPEG Layer-3 audio coding technology licensed from Fraunhofer IIS and Thomson. Supply of this product does not convey a license nor imply any right to distribute content created with this product in revenue-generating broadcast systems (terrestrial, satellite, cable, and/or other distribution channels), streaming applications (via Internet, intranets, and/or other networks), other content distribution systems (pay-audio or audio-on-demand applications, and the like) or on physical media (compact discs, digital versatile discs, semiconductor chips, hard drives, memory cards, and the like). An independent license for such use is required. For details, visit <http://mp3licensing.com>.

Decisionmark is the service provider of analog and digital TV off-air cable and satellite channel list.

Radio Locator is the service provider of AM/FM channel list.

© 2005-2008 All Media Guide, LLC provides music and video recognition technology that provides cover art and related text that enriches the Control4 user Navigators.

GNU

GNU GENERAL PUBLIC LICENSE TERMS AND CONDITIONS FOR COPYING, DISTRIBUTION AND MODIFICATION (Section 3.b.)

You may copy and distribute the Program (or a work based on it, under Section 2) in object code or executable form under the terms of Sections 1 and 2 above provided that you also do one of the following:

Accompany it with a written offer, valid for at least three years, to give any third party, for a charge no more than your cost of physically performing source distribution, a complete machine-readable copy of the corresponding source code, to be distributed under the terms of Sections 1 and 2 on a medium customarily used for software interchange. The complete text for this license is available on the Control4 web site at: <http://www.control4.com>.

Gracenote

Gracenote®, Gracenote logo and logotype, and the "Powered by Gracenote" logo are either a registered trademark or a trademark of Gracenote, Inc. in the United States and/or other countries.

Music and DVD recognition technology and related data are provided by Gracenote®.

Gracenote is the industry standard in Music and DVD recognition technology and related content delivery. For more information, visit www.gracenote.com.

Copyright

Copyright © 2013 Control4. All rights reserved. Control4, the Control4 logo, the Control4 iQ logo and the Control4 certified logo are registered trademarks or trademarks of Control4 Corporation in the United States and/or other countries. All other names and brands may be claimed as the property of their respective owners. Pricing and specifications subject to change without notice.

No part of this publication may be reproduced, photocopied, stored on a retrieval system, or transmitted without the express written consent of the publisher.

Contact Information

Control4 Corporation
11734 S. Election Road
Salt Lake City, UT 84020 USA
<http://www.control4.com>

Part Number: 200-00153, Rev K (OS 2.5)
Control4 Quick Start Guide.
May 10, 2013

Contents

1 Introduction

1 Account Setup

- 1 Register Your System
- 2 Set Up 4Sight
- 2 Set Up Remote Access
- 2 Set Up Music
- 2 Set Up TuneIn
- 2 Set Up 4Store

2 Customize Your System

3 Navigate Your System

- 3 Navigators and Interfaces
- 3 List Navigator
- 4 Multiple-Button Keypads
- 4 Navigator on the Web
- 4 MyHome for Mobile Devices, Smartphones, or PCs/Tablets
- 4 Navigator on Touch Screens and On-Screen Devices
- 4 Navigator Interface
- 4 Control4 Home Page
- 5 Secondary Pages
- 6 Change Rooms
- 6 Device Controls
- 6 Control4 Home Page Buttons
- 6 Listen
- 7 Watch
- 8 Security
- 8 Comfort
- 9 Lighting
- 10 More
- 11 Settings
- 13 Apps
- 13 Lock the Navigator

14 Composer HE

14 Composer ME

14 FAQ

15 Additional Information

Introduction

Welcome to the Control4® world of home automation! This *System Quick Start Guide* gives you quick information about how to start enjoying your Control4 system using OS 2.5 right away.

Your Control4 dealer or installer may have given you this guide after he or she installed your system. If so, is the system working the way you expected it to? After you read through this guide along with the Control4 *System User Guide* (available on the Control4 website under Products) and learn how your system works, if you still have questions, don't hesitate to contact your dealer who may have some great suggestions to make your system perform even better and give you more options.

In this guide, you'll learn some basics about how to:

- Set up your account and register your system.
- Customize your system your way.
- Use the Navigators (touch screens, remotes, MyHome app, TV screen, and so on) to manage lights, music, videos, the intercom, security, heating and cooling, and more.
- Use 4Store to purchase and use apps on your Navigators.
- Learn about Composer Home Edition (HE, sold separately) or Composer Media Edition (ME, free download) for even more control over your system.

Your Control4 system lets you automate many of the compatible electrical, electronic, and motorized devices in your home, helping to make your lifestyle more satisfying for you and your family.

- Control your lights from one or more keypad buttons. Edit lighting scenes on your touch screens or MyHomePC app.
- Control your video, movies, music, lights, and window shades in the home theater using your System Remote Control SR-150 or SR-250, touch screens, MyHome devices, and more.
- Play music in every room or on the patio with music zones or using a smartphone, Android, PC, Mac, or touch screens.
- Control heating, air conditioning, the alarm

system, sprinklers, garage door opener, fireplace, swimming pool, spa, and much more from a keypad or your Navigators.

- Use the intercom to send and receive audio and video (requires at least two touch screens that support audio or audio and video intercom).
- Monitor and automate your home remotely. Use this guide along with the Control4 *System User Guide* to learn about managing your Control4 system when you're away.
- Control equipment and devices in specific rooms. The Navigators let you control devices in one room or the whole house. If your Navigator isn't controlling the room you want, just change rooms (see "Change Rooms" later in this guide).
- Manage up to eight devices per room. For example, you can manage your TV, receiver, tuner, DVD player, movie projector and screen, and more in the same room.

See the Control4 *System User Guide* on the Control4 website at www.control4.com under Products (see "Additional Information" later in this document) to learn more about your system.

Account Setup

Your Control4 dealer may have already set up your personal account on my.control4.com and set up access to 4Store so you can purchase apps for your touch screens. If so, you can skip the next section. If not, you'll need to do the following things right away; otherwise, your system will not be fully functional.



NOTE: Control4 requires that you create an account at my.control4.com and register your controller before using your new system.

Register Your System

Go to my.control4.com to set up your personal Control4 account and register your controller so your system software can access and download information about movies, music, TV channels, software updates, 4Store, and more. (See *Account Quick Setup* on the Control4 website under Products > Manuals & Resources).

Your personal account also gives your dealer access to the account so they can perform maintenance and updates to your system.

You and your dealer will use this portal from time to time to update your system, manage licenses, or fix system problems. Review and change your Control4 account information there, too.

To register your system:

- 1 In a browser, go to my.control4.com.
- 2 At the login box, click the **Create New Account** link.
- 3 Enter the requested information in the online form.
- 4 After you've entered your information and accepted the Terms of Agreement, click **Create Account** at the bottom of the form.
- 5 You'll be prompted to register your primary controller. It's best to do this now; your dealer or installer can help if needed.
- 6 Write down your **Account Name**, **Email Address**, and **Password** (see below) and refer to it when you log into my.control4.com. You'll also need this information if you use MyHome on your mobile devices, smartphones, or PCs/Macs.



NOTE: Keep your information in a safe place.

Account Name: _____

Email Address: _____

Password: _____

Set Up 4Sight

4Sight™ lets you access your Control4 system remotely from any Internet connection in the world via the Control4 website (see "Navigator on the Web"). 4Sight also lets you use Anywhere Access—a feature of 4Sight that lets you connect to your Control4 system from a remote location worldwide using your smartphone or tablet (OS 2.4 or later). You can also receive customized email notifications related to system events as they occur. You can set up a 4Sight account (requires a small annual membership fee) while you're in your personal account.

For information about 4Sight, talk to your dealer.

Set Up Remote Access

You or your dealer can set up Remote Access from your personal account or from your touch screens or on-screen Navigator. See the *Control4 System User Guide* to learn how to set up Remote Access.

Set Up Music

Set up access to music or a music service, for example, Rhapsody® (requires a subscription), TuneIn, iTunes, MediaMonkey, and Windows Media Player. Use the Wireless Music Bridge to play music from your smartphone. See "Rhapsody" or "Digital Music" later in this guide, or talk to your dealer for details.

Set Up TuneIn

Create a free TuneIn account and use then the TuneIn app to listen to stations, shows, and more through your smartphone, tablet, PC, or touch screens. This product is available on new or legacy systems as a primary controller with HC-250, HC-800, or HC-1000 Controllers and OS 2.4 or later. See the *TuneIn Setup Guide* or *TuneIn User Guide* for details.

Set Up 4Store

You can set up a 4Store account and use 4Store.com to download purchased apps for your touch screens, MyHomePC, or on-screen Navigators for an enhanced home network experience. See "Apps" later in this guide.

Customize Your System

You can customize your system many ways. Your installer can help you with complicated tasks or fine tune your system for a satisfying lifestyle experience.

- Your Navigators let you perform all or most automated tasks (see "Navigate Your System" next). Ask your installer to show you how to use your system and Navigators, or refer to the

Control4 *System User Guide*.

- If you're a 'do-it-yourselfer,' Composer HE (sold separately) or Composer ME (free download) are apps that run on your PC; you can change some system configurations in these applications. See "Composer HE" or "Composer ME" later in this guide for details, and then ask your dealer how to get these apps if you're interested.
- Custom Home templates let you create your own Custom Home page on your touch screens and on-screen Navigators. See "Add a Custom Home Page" later in this guide (not available for the MyHome apps).

Navigate Your System

A variety of Control4-supported Navigators (some require additional purchase) let you control your system.

Navigators and Interfaces

- List Navigator (System Remote Control SR-250)
- Multiple-Button Keypads
- 5" or 7" touch screens (in-wall, portable, tabletop)
- On-screen Navigator (the Control4 menu that appears on your TV screen)
- MyHome app (optional, displays as an app on your iPhone, iPad, Android, or PC/Mac devices)
- 4Sight with Anywhere Access (for remote mobile or web access)
- Door Station (for audio and video intercom)

List Navigator

Control4 System Remote Control

The Control4 System Remote Control SR-250 (or 'remote') is a great way to manage your Control4 home. This universal remote can replace all other remotes in your home, combined! The big, red **4** button on the remote turns on your TV and displays the on-screen Navigator (see "Control4 Home Page" later in this guide). From there, you can control all the devices in your system. The System Remote Control SR-150 is a remote too, but it doesn't have a 'list' window.



TIP: No matter where you are in the interface, press the red **4** button to return to the main menu.

To learn how to use the remote, see the *System Remote Control User Guide* in the Control4 website under Products for your model (see "Additional Information"). The remote shown is an SR-250.

Ask your dealer about the Remote Recharging Station, available for remotes (OS 2.4 or later) to keep your remote's battery charged. See the *System User Guide* for details.



Basic Remote Buttons

4: On-screen Navigator.

Watch: Watch TV.

Listen: Listen to music.

Select: Make a selection.

Remote Programmable Buttons

Ask your dealer or installer to program the four colored buttons or other buttons on your remote to automate devices, or you can program them yourself (see the *Composer HE User Guide*).

Write down the action that each colored button performs below (for example, the red button turns on the TV to Channel 940).

Red: _____

Green: _____

Yellow: _____

Blue: _____

Remote Navigation

Your remote starts the on-screen Navigator on your TV. Navigating the system is easy; after you power on the TV (Watch, Listen, and more), use the **arrow** keys and **Select** button to scroll through and select the device you want to manage (for example, **Satellite**) or press a colored button programmed for a specific action.



TIP: The on-screen Navigator shows basically the same icons as those displayed on your touch screens.

If your remote has an LCD screen (SR-250), use the **List** window to make selections for your system.

Room Control

Select the room you want to control. At the top of the on-screen Navigator's page, select a room. When the room name displays, you can manage the devices in that room. You can do this on all Navigators.

EXAMPLE: On a touch screen located in the kitchen, select **Family Room**. Now you can control all of the devices in the family room that are in the Control4 system.

Multiple-Button Keypads

Customize Control4 lighting and keypads for countless scenarios and navigation. Lighting scenes, for example, are a popular way to use keypads. Your dealer can help you create lighting scenes, you can create them yourself using Composer HE, or if you have OS 2.3.0 or later, you can create some on a touch screen or on-screen Navigator. For details, see "Lock the Navigator," "Composer HE," the *System User Guide*, or *Lighting Scenes* on the Control4 website under Products > Manuals & Resources.

Navigator on the Web

Use the Web Navigator or Anywhere Access to control your system remotely. Your installer can set this up for you. Web Navigator and Anywhere Access require that you have a valid account on my.control4.com and a 4Sight subscription. See "Account Setup" for details. Also see *MyHome Setup Guide for Homeowners* in Products > Manuals & Resources.

MyHome for Mobile Devices, Smartphones, or PCs/Tablets

MyHome® on your iPhone®, iPod® touch, iPad®, Android®, PC, Mac, and tablet devices is a great way to control your system as you move around the house.

To use MyHome, first you'll need a MyHome license and the correct OS on your device, and then download the MyHome app from the Apple iTunes Store (iPad, iPod, and so on for Apple products), Google Play (for Android), or your personal account for the PC or Mac (see "4Store" for details).

Ensure that you have a valid account on my.control4.com, a 4Sight subscription, a 4Store account, and a MyHome license. See also *Control4 MyHome Setup Guide*, *MyHome App Quick Setup*, or the MyHome video on the Control4 website to learn how to use the MyHome app. Not all features are supported on these devices, however (for example, access to 4Store.com).

Navigator on Touch Screens and On-Screen Devices

Touch screens and on-screen Navigators (Control4 Navigator on your TV) display the same icons, but with slight variations.

Navigator Interface

Use touch screens, MyHome apps, or on-screen Navigators to control your system. If you use a touch screen or MyHome app, tap the screen to select an item.

Control4 Home Page

The Navigators show the following elements on the Control4 Home page (see the next figure). Options display either as button icons, as drop-down menus, or as listed items (on the remote).



NOTE: Only devices installed and added to your system display and become available in the Navigators.



TIP: Customize your own page! See "Add Custom Home Pages" for details.



Navigator Buttons

- (1) **Watch**—Select to watch videos and movies from connected media devices on your TV.
- (1) **Listen**—Select to listen to radio stations, Internet or subscription music, iPods, CDs, and stored music.
- (1) **Lighting**—Select to turn one or several lights on or off at the same time, dim lights, use or edit lighting scenes.
- (1) **More**—Select to view or change settings, motors or sensors, Wakeups, Intercom, general info, and more.
- (1) **Apps**—Select to run apps purchased on 4Store (not available on MyHome).
- (1) **Comfort**—Select to change your thermostat(s) settings.
- (1) **Security**—Select to access your security system, security gate, Door Station, IP cameras, and more.
- (2) **Intercom**—The top left of the screen shows an Intercom icon if Intercom-supported touch screens and Door Stations are in the system.
- (3) **Room**—The top center of the screen displays the current room. Select to change rooms. See “Change Rooms” for details.
- (4) **Time and Temperature**—Displays automatically. The interior and exterior temperatures appear (if configured; also available in 24-hour format). To change the interior temperature, select the **Comfort** button and reset your Wireless Thermostat.
- (4) **WiFi strength**—If a touch screen uses WiFi, it displays how strong your WiFi signal is. This appears next to the time and temperature icons (not applicable on devices that support MyHome).
- (5) **Media dashboard**—Displays the device’s buttons when a device is on. (Use the remote’s arrow buttons

for on-screen navigation). Buttons vary by device type, and can include audio, video, and more.



Secondary Pages

The secondary pages show the menu selections, **4**, Back, Intercom buttons, view options, breadcrumb links, device controls, and so on. Use the sort and list buttons to change how you view items (shown below).

Common Button icons

- 4:** Return to the Control4 Home page or Custom Home page.
- Back:** Return to the previous page.
- TIP:** The ‘breadcrumbs’ links (in the previous example, Watch > Movies > All Movies) let you navigate back or forward.
- Sort/List Buttons:** Select the number, alpha, grid, or list views.
- Media Zones:** View and change your zones. See “Media Zones.”
- Favorites:** View your favorites. See “Favorites.”



Change Rooms

The current room name is displayed in the top middle part of the screen. Select to change the room. In Change Rooms, select the floor and room.



NOTE: In Change Rooms, a star next to the room indicates the current room.

Device Controls

The device controls page appears in the Navigator for most audio or video devices, for example, DVDs, media players, and VCRs (see “Control4 Home Page Buttons”).

Each device control is a virtual representation of the controls on your device’s remote. Select these buttons, or choose from the list of channels or stations; for example, select the **Watch** icon to watch your favorite channels.

These controls do not display on the on-screen Navigator.



Control4 Home Page Buttons

Listen

The music options below depend on what’s configured in your Control4 system. On your Navigator’s Control4 Home page, select **Listen**, view your options, and then select or manage:

- **My Music** (Digital Music)—Lists My Artists, My Albums, My Genres, My Queue, and more. You can also create and manage playlists here. My Music playlists come from your digital music collection via your network-attached storage device (NAS).

- **Rhapsody** (or other music services, for example, Pandora, TuneIn)—Displays when you subscribe to the service.
- **iPod or iPort**—Play music from your iPod.
- **Media Zones**—Use on the media dashboard to manage music zones by room (the media dashboard is not available for on-screen (TV) Navigators; use the remote).
- **Satellite Radio**—Select a music channel to listen to.
- **TuneIn**—Listen to your favorite stations and shows worldwide, and save Favorites.
- **Internet Radio**—Have your installer set this up to listen to your favorite Internet stations.
- **Tuner**—When active, displays in your Media Dashboard. The Tuner icon on your on-screen Navigator lets you access AM, FM, and XM radio.
- **Now Playing**—View what’s currently playing.
- **Receiver/CD Changer/Disc Changer**—Displays the device controls and other options such as Browse CDs.
- **Network drive (NAS)**—Stores your music and videos. Music and movie cover art is seen if scanned in.
- **Wireless Music Bridge**—In OS 2.5 or later, when connected to a Control4 amplifier or powered speakers, this Control4 audio device lets you stream music, Internet radio, and podcasts from your smartphones or tablets through iOS (AirPlay), Bluetooth, Android, or Windows (using DLNA). Check with your dealer for details.

Use your remote, the media dashboard, or a media page to control your music volume, change channels, play, stop, pause, fast forward, and more.



NOTE: The Sony STR-DA2800ES/DA5800ES Receivers display their own set of icons under Listen. See the *System User Guide* for details.

Radio

Use **Listen** to play the radio (AM, FM, XM, satellite, and more).

- 1 From your Control4 Home page, select **Listen > All Stations, Genres, Sources, or Listen > TuneIn** (OS 2.4 or later and a supported controller) to select your favorite stations.
- 2 Select the station to listen to or select your favorites.

- 3 Press the **Stop** button on the media dashboard or media page, or select **Room Off** on the remote to stop playing the radio or music service.

For details about how to use TuneIn, see the *TuneIn Setup Guide* or the *TuneIn User Guide* on the Control4 website under Products.

My Music

Use **Listen** to play your digital music.

- 1 From your Control4 Home page, select **Listen > My Music**.
- 2 From the list, select the **My Artists, My Albums, My Genres, My Genre/Artist, My Playlists, or My Queue** (touch screens and on-screen) or albums and tracks (MyHome). The remote displays a slightly different list.
- 3 To view a list of music that's currently playing with cover art (if applicable), select **Now Playing**. The song currently playing appears in the media dashboard. You can select **Shuffle, Clear, Repeat, or Edit**.
- 4 To add songs to your digital music collection (My Music), scan the music using **Composer HE** or **Composer ME**, and select the **+** button in your music list. See the *Composer ME User Guide* or *Composer HE User Guide* for details.
- 5 To play a song or a playlist, locate the song or album, and select **>** (play). The song or playlist shows up in My Queue, where you can use **Save As Playlist**.

Create a New Playlist

Use **Listen** to add your favorite songs or playlists in My Playlists to My Queue.

- 1 From your Control4 Home page, select **Listen > My Music**.
- 2 Select the song or album.
- 3 Select **My Queue**. In My Queue, select **Save Playlist**.
- 4 When prompted, name the **Playlist**.
- 5 Edit the Playlist, change the order of the songs, and add or delete songs from this menu.



NOTE: Digital music playlists are not the same as Rhapsody or other subscription playlists. Refer to your subscription service's website.

Media Zones

Use **Media Zones** to play music in one or more zones (rooms). Add or remove zones, adjust the volume, skip forward/back, and use Room Off or mute.

- 1 On the media dashboard, select the **Media Zones** icon (see "Secondary Pages"), or select **Listen > Zones** from a touch screen, MyHome, or remote.



NOTE: You can change zones only when music is playing.

- 2 Add a zone. Select **Add Rooms**, and then select or de-select the rooms where you want to play or not play music, and then select **OK**.
- 3 Remove a zone. Select the room to stop playing music, and select **Stop**, and then select **OK**.

iPod

Use **iPod** to listen to your iPod. Select **My Playlists, My Artists, My Albums, My Genres**, and so on (composers, audio books, podcasts).

- 1 From your Control4 Home page, select **Listen > iPod**.
- 2 Select the name to listen to, and select the **Play >** arrow.

Wireless Music Bridge

Use the **Wireless Music Bridge** icon in Listen to listen to music or podcasts from your smartphone. See the *Using the Wireless Music Bridge* on the Control4 website under Products for details.

Watch

The **Watch** icon lets you access your TV, cable, or satellite stations (depending on the devices in your system). Various icons display for access to your digital video collections (DVD), VCR, network storage, Disc Changer, Wii, and so on. Use your remote or the media dashboard to control the volume, change channels, and so on.

From your Control4 Home page, select **Watch**. The next page shows icons in a grid format (if you select **Movies**, for example).



NOTE: The Sony STR-DA2800ES/DA5800ES Receivers display their own set of icons under Watch. See the *System User Guide* for details.

TV

Use **Television** to watch TV.

- 1 From the Control4 Home page, select **Watch > Television** (by type or manufacturer), **Satellite, Channels, Cable**, and more.
- 2 On the sub-menu, select **All Channels, Genres**, and so on. Select **All Channels** to view a list of available channels.
- 3 (Optional) If the device controls appear, you can use those buttons to change the channel.

Movies

Use **Movies** to watch movies or videos. Watch your favorite movies from a VCR, DVD player, disc changer, Sony STR Receiver, or media player.



NOTE: Your or your installer must scan your movies first. See the *Control4 System User Guide, Composer HE User Guide or Composer ME User Guide* for details.

- 1 From your Control4 Home page, select **Watch > Movies**.
- 2 Select **All Movies, Genres, Ratings, Directors**, or **Actors**.
- 3 Select the movie or video to view from the list. Use your remote or the media dashboard to play, stop, pause, rewind, change volume, and more.

Edit DVDs or Videos

See the *Control4 System User Guide* for details.

Add Movies to Your Library

Use Composer ME or Composer HE to scan and add movies or videos from a media player, network storage, and more. See the *Composer ME User Guide or Composer HE User Guide* or your device's installation guide for details.

Security

Use **Security** to view or change security or IP cameras where you can add up to 10 cameras per page for the 5" or 7" In-Wall Touch Screen,

7" Portable Touch Screen, or MyHome apps. TV screens allow up to 18 cameras per screen.

IP Camera

If you have a security camera, use **IP Camera** to view its images. For example, an IP Camera can be installed near your front door so you can see who's there.

- 1 From your Control4 Home page, select **Security > IP Camera**.
- 2 Select the camera to view the live feeds which can be any IP cameras, traffic cameras, or weather information connected to your system or over the Internet.

Door Station

Use **Intercom** to manage your Door Station and touch screens (if they support audio and video intercom). See "Intercom" later in this guide or in the *Control4 System User Guide* for details.

Security System

Use **Security System** to manage your security system. View and use the device controls or presets for your security system. Refer to your manufacturer's instructions for settings.

Comfort

Manage Temperature

Use **Comfort** to adjust the Control4 Wireless Thermostat settings.

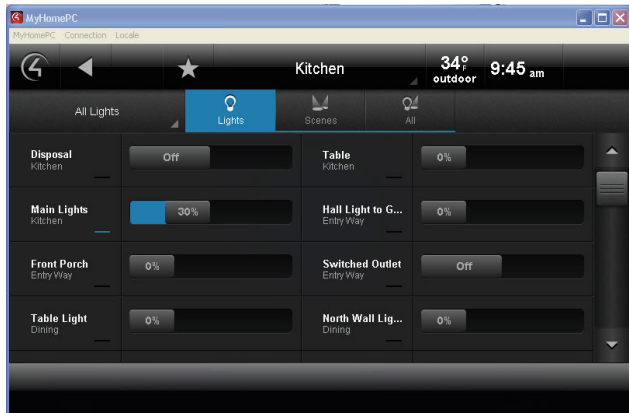


TIP: On a Navigator, you can adjust all Wireless Thermostats in the home from one page.

- 1 From your Control4 Home page, select **Comfort > Wireless Thermostat**. If you have more than one thermostat in the system, select the one to change.
- 2 Select **Cool, Heat, Auto, Off**, or **Fan** from the sub-menu to control the temperature, heating/cooling, and fan power for your thermostats.

Manage Thermostat Scheduling

Use **Comfort > Wireless Thermostat** and the **Program** button to set the thermostat's schedule. See the *Control4 System User Guide* for details.



Lighting

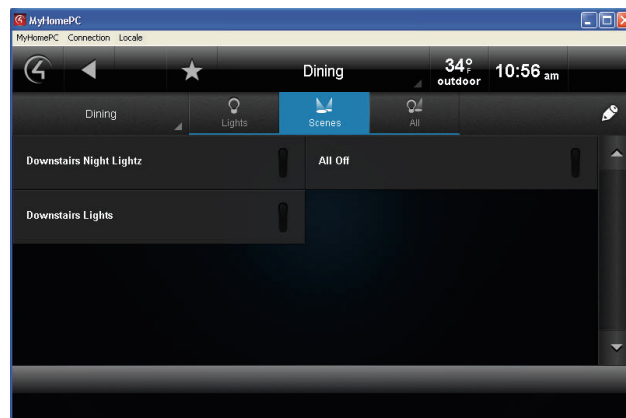
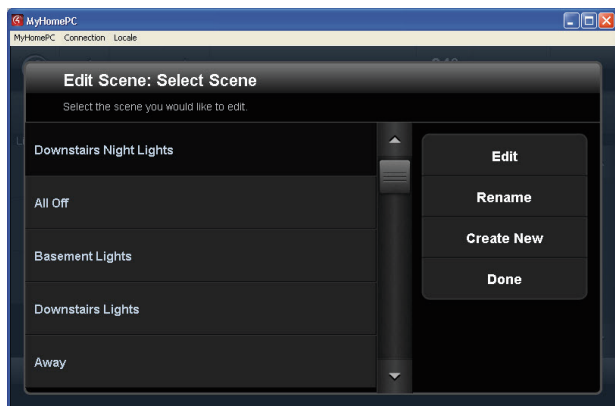
Lights

Use **Lighting** to adjust your lights. You can view the lights in all rooms and on all floors without changing the room displayed on your Navigator.

In OS 2.5, Control4 introduces two new advanced lighting systems for your pleasure and convenience: Panelized Lighting and New-Generation Lighting. Check with your dealer for details.

From the Control4 Home Page, select **Lighting**.

- *View or activate house lights*—Select **All Lights** on the top left to view all controllable lights in the house.
- *View and activate room lights*—Select a **room** and **light** to turn a light on or off or adjust the light levels. Adjust the light level by tapping on the % button.
- *Turn lights on or off*—Select **On** or **Off** on the light (switch only).




- *Ramp light levels*—Select the % to change the light level (dimmers only).
- *Room lights*—Select a **room** and **light** to turn a light on or off or adjust the light levels.
- *Learn*—In Edit mode (see below), select **Learn** to learn the current light levels of selected lights.

Lighting Scenes (Scenes)




NOTE: Make sure your dealer adds the Advanced Lighting Scenes agent to your project so you can create and edit scenes yourself on a Navigator.

Create a lighting scene:

- 1 In Lighting, select **Scenes** or **All**.
- 2 Select the pencil icon in the upper-right corner. 
- 3 Select **Create New**.
- 4 Select the rooms to add to the scene and select **Next**.
- 5 Select the lights to add to the scene and select **Next**.
- 6 Change the light level and select **Next** or select **Add Lights** to add more lights or select **Learn** to learn the current light levels.
- 7 Select **Next**.
- 8 Use the keyboard to name the new scene, and then select **Done**.
- 9 Select **Save**.

Edit a lighting scene:

- 1 From the home page, select **Lighting**.
- 2 Select **Scenes** or **All**.
- 3 In Lighting, select the pencil icon in the upper-right corner. 

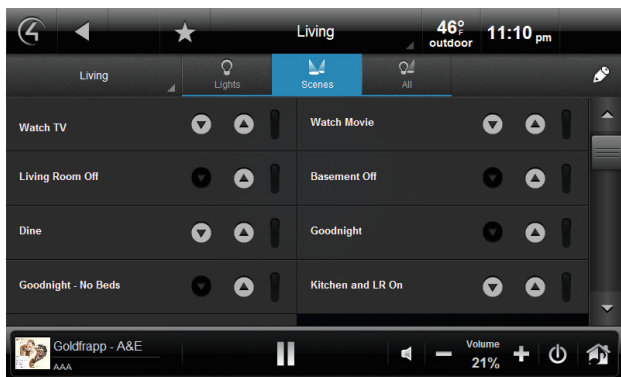
- 4 Select the scene to edit, and then select **Edit**.
- 5 Change the light levels as needed.
- 6 You can go to each light and change the light levels, and then select **Learn** for the system to learn the current light levels.
- 7 Select **Next** or **Add Lights** to add or remove other rooms.
- 8 Select **Next** or **Save**.

Rename a lighting scene:

- 1 From the home page, select **Lighting**.
- 2 Select **Scenes** or **All**.
- 3 Select the pencil icon in the upper-right corner.
- 4 Select the scene to edit, and then select **Rename**.
- 5 Use the keyboard to change the scene's name.
- 6 Select **Done**, and then **Done** again.

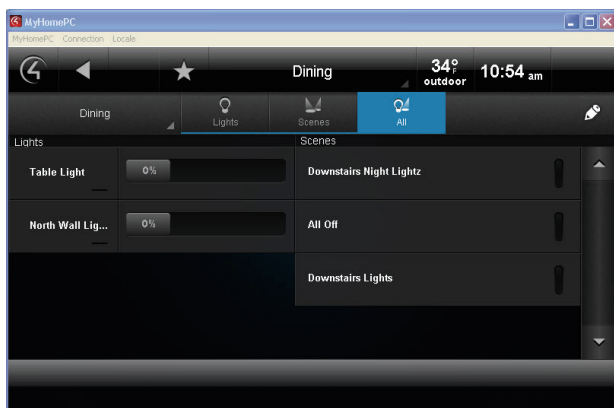
Activate a lighting scene:

- 1 From the home page, select **Lighting**.
- 2 Select **Scenes** or **All**.
- 3 Select the scene to activate.



Ramp a lighting scene up or down:

- 1 From the home page, select **Lighting**.
- 2 Select **Scenes** or **All**.



- 3 Select the scene to ramp up or down.
- 4 Select the **up** or **down** arrows to ramp or fade the scene.

All

Select **All** at the top of the page to view all lights and lighting scenes.

More

Use **More** to view, use, or change Settings, Wakeups, Motors/Sensors, Blinds, Intercom, and more (whatever is installed in your system).

Settings

See “Using Settings” in this document for information about viewing or changing settings.

Wakeups

Use **Wakeups** to execute a Wakeup event.



NOTE: A Wakeup event must be programmed in Composer Pro or Composer HE. Talk to your dealer for details.

- 1 From your Control4 Home page, select **More > Wakeups**.
- 2 Select the **Wakeup** to execute. Use the scroll wheel to adjust the time (does not apply to List Navigators).

Blinds

Use **Blinds** to view and use your motorized blinds and drapes.

Motor/Sensor

Use **Motor/Sensor** to view, sort, or change the motors and sensors in your home. For example, you hear someone outside your house late at night, and you quickly want to make sure all of your doors and windows are locked.

- 1 From your Control4 Home page, select **More > Motor/Sensor**.
- 2 From the list, view or change the status of devices that use motors or sensors; for example, your motion sensors.
- 3 Select the icon to the left of the motor or sensor to change its status.

Intercom

If you have two (2) or more supported touch screens or Door Stations in your home or office, you can send broadcast messages, communicate through the touch screens using audio (and/or video if supported on that touch screen), monitor activities in another room, and more. See the *Control4 System User Guide* for details.

Settings

Use **More > Settings** to view information about your system, view or change your Director or network, add a new Custom Home page, change your screen saver, add or change wallpaper, allow Remote Access, register the controller, use Service Connection, manage battery power, or adjust the backlight (not all of these options are available on MyHome apps). See the *System User Guide*.

From your Control4 Home page, select **More > Settings**. The following icons appear:



NOTE: The MyHome apps do not display some of these features.

About

Presents information about your Control4 system: Director version, battery level, Navigator version, dealer information, IP address, and more.

Add and Edit Favorites

Use **Edit Favorites** to edit the properties of your favorite applications.

Add a Favorite:

- 1 Go to the page you want to add to your Favorites folder.
- 2 Select the **Star** button (top of page) or in the upper-left corner of the on-screen Navigator.
- 3 Select **Add** to add your favorite link.
- 4 Type a name using the on-screen keyboard.
- 5 When you are finished, select **Done**.
- 6 Select **Save**, and then **Close**.
- 7 To use the favorite, select **Star**, and then select the favorite by its assigned name.

Edit a Favorite:

- 1 From **More > Settings**, select **Edit Favorites**.
- 2 Select the folder that contains the Favorite.
- 3 To the right of the Favorite, select **Edit**.
- 4 Change the name, icon type, and so on, and then select **Done**.
- 5 Select **Close**.



TIP: You can create Custom Home pages from your Favorites selections.

Change Screen Saver

You or your dealer must add screen saver photos and media to Composer to use this feature (unless you choose just to display the time and temperature). Check with your dealer if you need help adding photos.

- 1 From your Control4 Home page, select **Settings > Screen Saver**.
- 2 Select the **type** (None, Blank, Current Media, and so on), Screen Saver time out in minutes, Change Photos every x seconds, and the settings (Media, Time, Date, Temp, Photo, Shuffle).
- 3 Select **Preview** to check your changes.

Change Wallpaper

Use **Wallpaper** to change your background.

- 1 From your Control4 Home page, select **More > Settings > Wallpaper**.
- 2 Decide whether to change or set the default wallpaper.
- 3 To change the wallpaper, select from the available images. The wallpaper changes immediately on all pages in the touch screens, MyHome apps, or on-screen Navigators.
- 4 If you don't want any wallpaper, select **Black**.



NOTE: You cannot delete the wallpaper options.

Theme

Themes let you use purchased theme apps from 4Store if you want a different look and feel for your Navigators (not including the remote).

- 1 From your Control4 Home page, select **Apps > 4Store**.
- 2 Browse, search for, or purchase your theme app to download (see the *Control4 System User Guide* for details).
- 3 Select **Theme**. Your new theme appears.
- 4 Select the theme you want. Select **Default** to return to the original Control4 theme.

Add a Custom Home Page

Custom Home pages let you add favorites with up to 10 icons to create your own Custom Home page.

Custom Page Template

Use **Custom Home** to create a new Custom Home page.

- 1 From your Control4 Home page, select **More > Settings > Custom Home** to create any Favorites to which you want to link from your Custom Home page.
- 2 Under **Default Room**, select the default room to use.
- 3 Under **Automatically Return to Defaults**, select the time to return to that view.
- 4 Under **Default View**, select **Custom Home** or **Favorite**.
 - If you selected **Favorite**, select the Favorite you want, edit the items, and then press **Select**.
 - If you selected **Custom Home**, select **Edit Menu Items**.
- 5 Select the items to use, and select **Add Button**.
- 6 Select **Save > Close** when finished.

Director

Use **Director** to view your current Director, connect to it, or add/remove a Director.

- 1 From your Control4 Home page, select **More > Settings > Director**.
- 2 View the Director page, and select what you want to do (connect or cancel).
- 3 To connect to a Director, select the **Director** or **Other**.
 - a If **Other**, select the name, type the Director name, and then select **Done**.
 - b Select the **IP Address** box. Type the Director's IP address.
 - c Select **Done**.

- 4 To remove a Director, select **Remove Director**, and then select **Yes**.

Network

Use **Network** to view or change general network information: DHCP, IP, DNS, Wireless, WiFi status signal strength, and refresh settings.

IP Settings

Use **Settings** to view or change your network settings.

- 1 From your Control4 Home page, select **More > Settings > Network**.
- 2 Select **Static** or **DHCP**. If you use **Dynamic IP (DHCP)**, which is recommended, you don't need to do anything. If you select **Assigned IP (static)**, type the address. You can also set up your wireless settings if any of your devices are wireless.
- 3 Select **Done > OK**.

Remote Access

Lets you enable or disable remote access so your dealer can log into your system for maintenance or to fix problems.

Registration

- 1 Use **More > Settings > Registration** to view your registration status or register your controller.
- 2 Follow the instructions on the page, and then select **Activate**.

Service Connection

From your Control4 Home page, use **More > Settings > Service Connection** to 'check in' with your dealer so your dealer can view and change your system if needed.



NOTE: Ensure that **Remote Access** is enabled. Check with your dealer for details.

Power Management (Batteries)

For battery-powered touch screens only.

- 1 From your Control4 Home page, use **More > Settings > Power Management** to change your battery settings and conserve energy.
- 2 Change the backlight and suspend settings as needed.

Adjust the Backlight

- 1 From your Control4 Home page, use **More > Settings > Backlight** to adjust the brightness (backlight) on the touch screens or on-screen Navigator.
- 2 Move the **scrollbar** up or down to adjust the backlight intensity. The change is immediate.



NOTE: A slightly different format appears on the on-screen Navigator than on touch screens.

Apps

Use **Apps** to view top stories, weather, news, sports, or any apps you've purchased from 4Store (account required).



NOTE: The News and Weather apps are installed by default.

- 1 From your Control4 Home page, select **Apps**.
- 2 View the news and weather and any other apps. The 4Store icon also appears here.

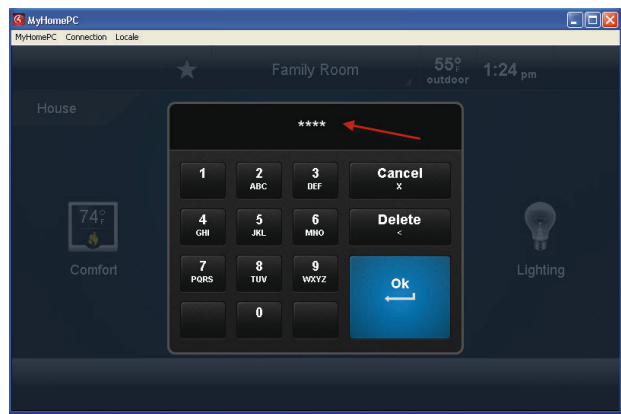
4Store

Use **4Store** to buy apps, browse app categories, search for apps, or check your 4Store account. Choose from many categories and apps to use with your Control4 devices (not applicable to MyHome apps).

- 1 From your Control4 Home page, select **Apps > 4Store**.
- 2 Browse, search for, or purchase the apps to download. See the *Control4 System User Guide* for details.
- 3 View and use the list of apps you purchased from 4Store in **Apps**.

Lock the Navigator

If your system is installed in a home or building where you don't want others to access certain areas of your touch screens or MyHomePC (for example, anything in Settings), you can lock them out. The only way they can access these areas is with a PIN code (see the next figure).



The following areas can be limited from viewing or accessibility. The user must enter the PIN code to access these areas:

- **Access Agent** (Enabled or Disabled)—Enable to use the Access Agent; otherwise, it can be disabled.
- **Hide Digits** (Enabled or Disabled)—Shows or hides the PIN code when entered.
- **C4 Home** (Unlocked or Locked)—Lock someone from the C4 home page until a PIN code is entered.
- **Back Button** (Unlocked or Locked)—Lock someone from using the Back button until a PIN code is entered.
- **Favorites** (Unlocked, Locked, or Hidden)—Lock someone from using the Favorites page until a pin code is entered.
- **Room Selector** (Unlocked, Locked, or Hidden)—Lock someone from changing rooms until a PIN code is entered.
- **Intercom** (Unlocked or Locked)—Lock someone from using Intercom until a PIN code is entered.
- **Settings** (Unlocked or Locked)—Lock someone from using the Settings pages until a PIN code is entered.
- **More** (Unlocked or Locked)—Lock someone from using the More pages until a PIN code is entered.

Check with your dealer to set up access or see the *System User Guide* for more details. You can change your own areas in the Composer HE Agents view.

Composer HE

Your Control4 dealer or installer will set up and customize your basic system, but if you want to customize your system further, you can use the Composer HE application (sold separately) and install it on your PC. You can purchase this product from your dealer.

Here are some ideas about customizing your system using Composer HE.

- Customize your Control4 system from a Windows PC on your home's local network, or from any Internet-connected Windows PC (requires Control4 4Sight subscription).
- Monitor and change some settings to control your lights, thermostat, security system, or other devices from your PC.
- Configure the Control4 devices on your system to set LED colors on dimmers, switches, and keypads; set the ramp rates and the default levels of your dimmers; set your Wireless Thermostat schedule; program the four device-specific buttons on your remote and more.
- Scan and manage your digital music and DVD media collections.
- Add new agent types to your system. Use Media Scenes to tie together the audio-source selection, volume control, and on/off state of multiple rooms so that they work as one zone.
- Use the Email Notification agent in Programming to notify you when events occur on your system.
- Create and modify Lighting Scenes customized to your needs.
- Use the Scheduler agent to program events based on date, time of day, and sunrise/sunset.
- Use the Intercom agent to customize intercom activities on your 5" or 7" touch screens, and much more.
- Create your own Wakeup scenes. Program your system to behave as you want it to, tying together all the capabilities of the Control4 environment into a single, controllable, and programmable system.
- Manage variables in the Programming view.

Composer ME

To set up your media and playlists and perform other tasks related to music, movies, and videos, download and use Composer ME for free! Check with your Control4 dealer for details.

FAQ

- 1** *Do I have to use my TV as the interface to select music, listen to the radio, and control my lights?*
No. Your TV interface (on-screen Navigator) is just one of many interfaces you can use with your Control4 system. You can use the list Navigator on your Control4 remote to control all of the automated functions in your home, or you can purchase Control4 7" Portable Touch Screens to sit on your nightstand, countertops, or coffee table or the 5" or 7" In-Wall Touch Screens. For mobility, use the MyHome app on your smartphones, PCs, tablets, or use the 7" Portable Touch Screen.
- 2** *Do I need to point the Control4 System Remote Control at the TV?*
No. Your remote uses a wireless communication standard to give you ultimate flexibility, and lets you use the remote up to 50 feet from your Control4 system while standing in any direction.
- 3** *Can I listen to the music on my MP3 player, iPod, or a USB drive with my Control4 system?*
You sure can! If you have music in digital format on your MP3 player or USB drive, you can plug it into the USB port on your controller, scan your music, and stream it to any room in your house. You can use Control4 Composer HE to auto-scan your music and import album cover art and information for your music collection. Control4 supports the AAC format, too. You can also use MyHome, Wireless Music Bridge, or services such as TuneIn to listen to music on your iPod, iPad, PC, Android, or touch screens (support varies per service and device).
- 4** *How do I add lamps and other appliances to my Control4 System?*
By using the Control4 Outlet Switch or Outlet Dimmer, you can add stand-alone lamps and appliances to your Control4 system. These

devices let you turn your appliances on or off at certain times of the day automatically, or add your stand-alone lamps to your existing lighting scenes.

5 *Why are some of the icons on the display grayed out?*

Features that are grayed out on your Navigators are not currently set up on your Control4 system or are not available in the room you're on.

Contact your Control4 Dealer to add cool new devices and features to your Control4 system!

6 *How can I make my lighting more energy efficient?* In OS 2.5 or later, we provide two (2) new lighting systems that will help you save energy by supporting a wide variety of devices, such as LEDs, compact fluorescents, and so on. Check with your dealer for details.

7 *How do I use the intercom with my system?*

First, you have to own at least two (2) Control4 devices (intercom-supported touch screens or Door Stations) that support intercom. Earlier versions of the 5" and 7" In-Wall Touch Screens support audio Intercom only. The 7" In-Wall Touch Screen with Camera, the 7" Portable Touch Screen with Camera, and the Door Station all support audio and video intercom.

8 *Who should I call if I have a problem?*

Support for Control4 products is provided by your Control4 dealer.

Additional Information

For more information about Control4 products and services, please visit www.control4.com or contact your Control4 dealer. For more information about how to use the Control4 system, refer to the following list found on the Control4 website under Products.

A PDF of the following documents is available on the Control4 website for our customers and end users:

- **Control4 System User Guide**—A comprehensive guide for the Control4 system. Online help is available also on the web.
- **Control4 System Remote Control User Guides**—These guides show you how to use the

SR-150 or SR-250 with your Control4 system.

- **Composer HE Getting Started**—This guide gives you some pointers to get started in Composer HE. Help is available in the Composer HE application.
- **Composer HE User Guide**—A comprehensive guide to use Composer HE with your Control4 system. Online help is available also on the web.
- **Composer ME User Guide**—A comprehensive guide to use Composer ME with your Control4 system. Help is available in the Composer HE application.
- **MyHome Setup Guide for Homeowners**—This guide teaches you how to install and set up MyHome apps for mobile devices, smartphones, and PCs/tablets.
- **MyHome App Quick Setup**—This quick guide shows you how to get your MyHome app up and running on your supported devices.
- **Lighting Scenes**—This quick guide shows you how to create a lighting scene from your Navigator, and then edit a scene you want to change. It also shows you how to ramp and fade lighting scenes.
- **Account Quick Setup**—This quick guide shows you how to get a my.control4.com account set up and how to register your controller.
- **Access Agent**—This quick guide shows you how to use the Access agent to control who sees what and what they can access on your touch screens.
- **Remote Recharging Station Setup Guide**—This guide shows you how to set up a Remote Recharging Station for your new or existing System Remote Control (SR-150 or SR-250).
- **Remote Recharging Station Quick Setup**—This is a quick guide to setting up your remote to work with the Remote Recharging Station.
- **TuneIn Setup Guide**—This guide shows you how to pair your devices with TuneIn. It also shows you how to sync favorites on your tunein.com account with your system.
- **Using TuneIn**—This guide shows you how to browse and select stations or shows to listen to and how to search for them. It also includes some tips.

- *Using the Wireless Music Bridge*—This guide shows you what you can play, what is required, how to play from supported devices, and how to disconnect.

Control4.com | 888.400.4070

